

MONTHLY MEMBERSHIP PROGRESS REPORT

LOCATION ARKANSAS

District 7 I

Results as of: 5/31/2022

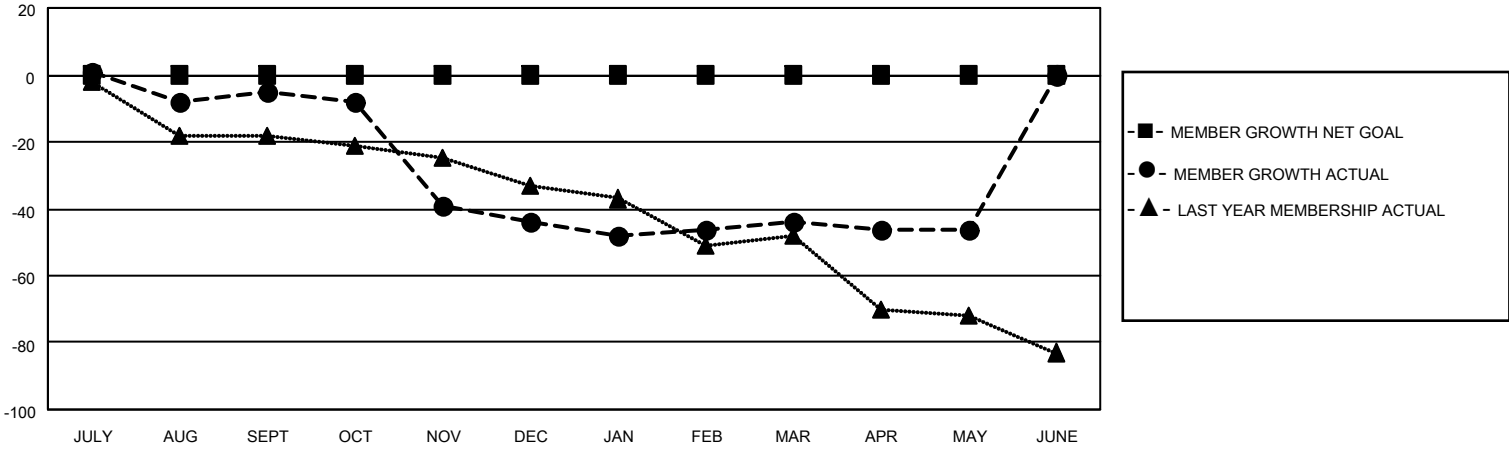
Clubs			
RESULTS FOR 2021-2022			
QUARTER	NEW CLUB GOAL	NEW CLUBS	DROPPED CLUBS
JULY/AUG/SEPT	0	0	0
OCT/NOV/DEC	0	0	1
JAN/FEB/MAR	0	0	0
APR/MAY/JUNE	0	0	0

Members			
RESULTS FOR 2021-2022			
QUARTER	MEMBER GROWTH NET GOAL	MEMBER GROWTH ACTUAL	DROPPED MEMBERS ACTUAL (including transfers)
JULY/AUG/SEPT	0	22	21
OCT/NOV/DEC	0	15	49
JAN/FEB/MAR	0	15	14
APR/MAY/JUNE	0	7	9

GOALS AND ACTUAL NEW CLUBS CUMULATIVE



GOALS AND ACTUAL MEMBERS CUMULATIVE



<p>DROPPED CLUBS: 1</p>	<p>23 CLUBS OF 31 ADDED 1 OR MORE NEW MEMBERS</p>	<p style="text-align: center;"><u>GENDER DISTRIBUTION</u></p> <p>MALE 400 (66.78%) FEMALE 199 (33.22%) NON BINARY 0 (0.00%) PREFER NOT TO ANSWER 0 (0.00%)</p>
<p><u>DROPPED MEMBERS</u></p> <p>DECEASED 8 CLUB CANCELLED 0 OTHER 85 TOTAL 93</p>	<p style="text-align: center;">CLICK HERE FOR CUMULATIVE MEMBERSHIP DATA</p>	<p>TOTAL FAMILY UNIT MEMBERS 65 FAMILY MEMBERS PAYING HALF DUES 33</p>